

# Pre treatment and digestion of organic waste



## Full-liner in construction of recycling plants



## Eggersmann Group



Headquarter Marienfeld



International locations

- Founded: 1951
- Number of employees: ~ 800
- Turnover 2020: ~ 225 Mio EUR

Today, Eggersmann group is a network of independent companies engaged in the construction sector as well as the development and realization of environmental technologies on an international scale.

[www.eggersmann-recyclingtechnology.com](http://www.eggersmann-recyclingtechnology.com)

## Main activities





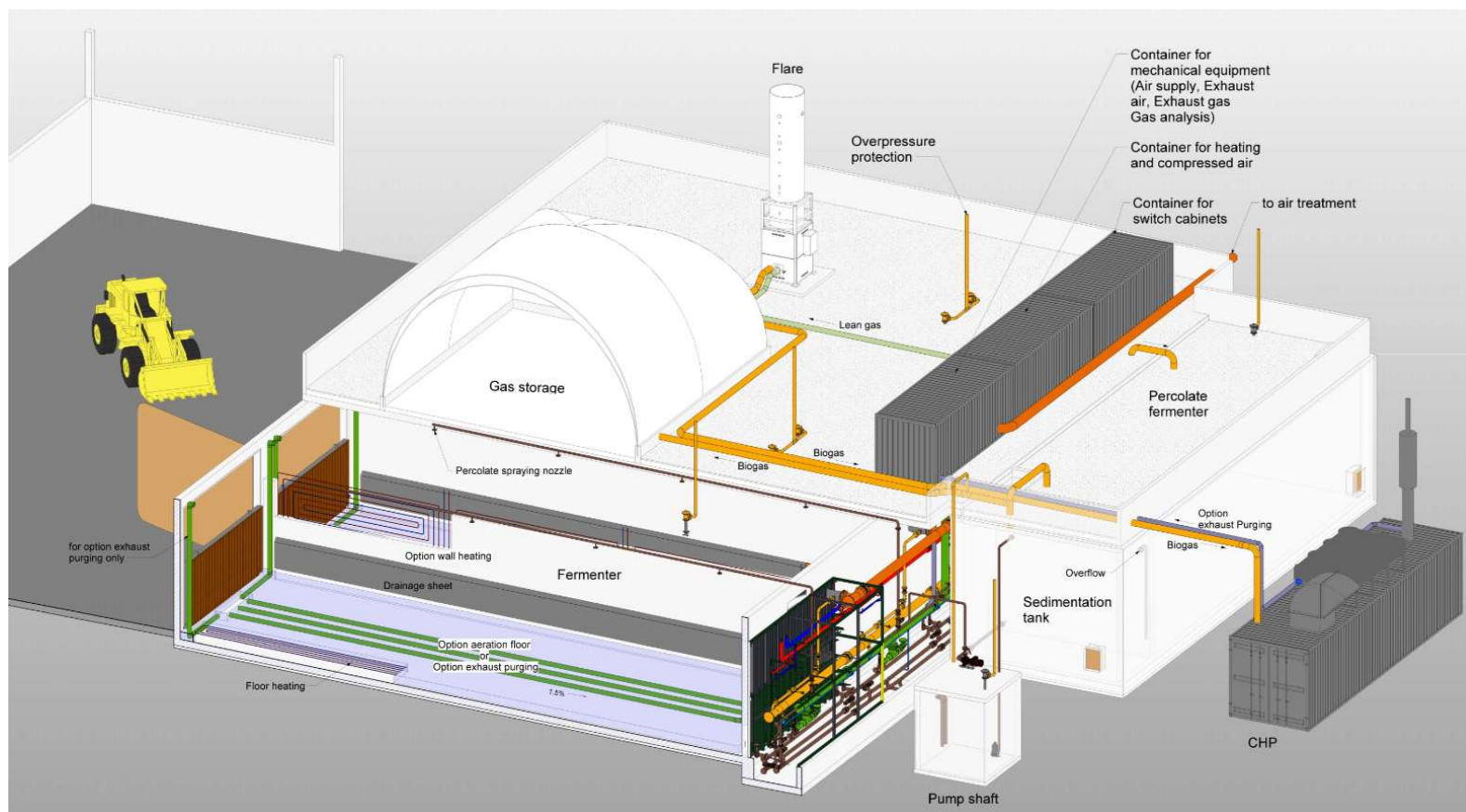
## Pre treatment of organic waste

Depends on AD technology

Wet AD:	Semi-dry (plug flow)	Dry batch
Mechanical sorting	Mechanical sorting	Mechanical sorting for MSW
Pulper		
Sediment removal		
Suspension - > AD	< 60 mm -> AD	< 80 mm (or all) -> AD

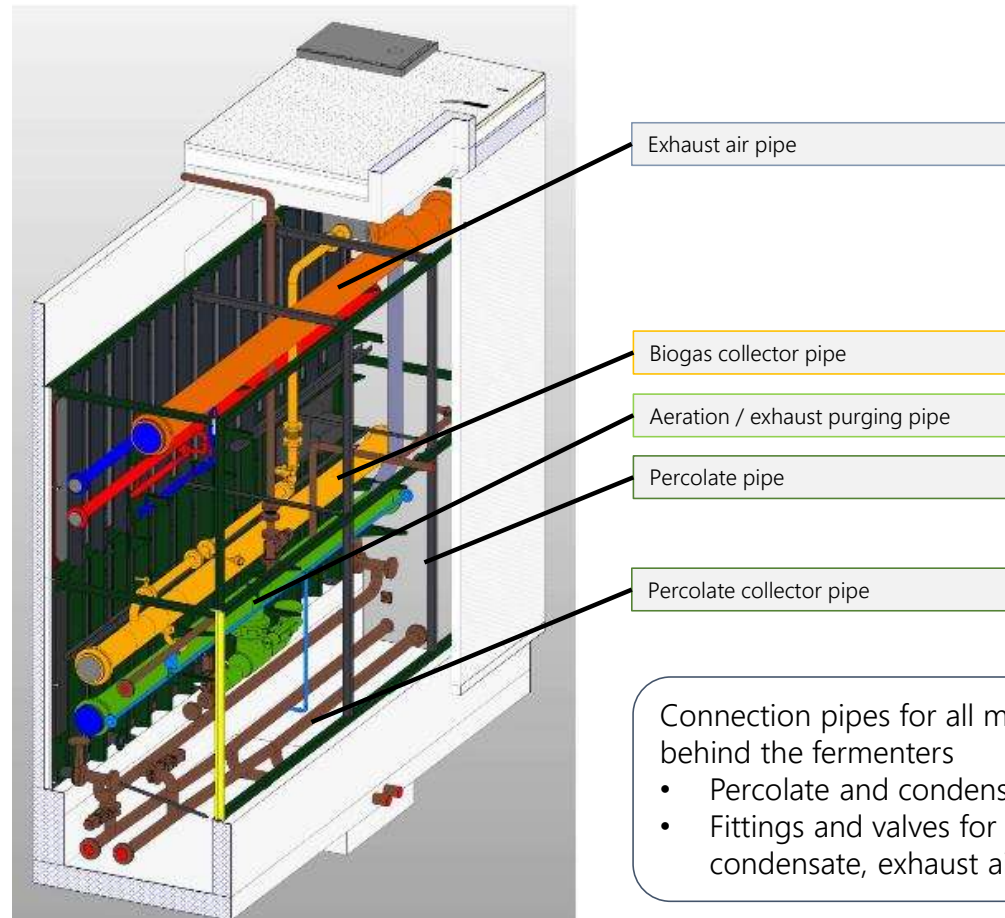
For an affordable waste treatment: Keep it simple!

## BEKON Dry Batch Process



## BEKON Dry Batch Process

Modular rear wall contains large part  
of mechanical components  
and is preassembled



## BEKON Dry Batch Process

Assembly rear wall skid





## BEKON Dry Batch Process

Assembly rear wall skid



## BEKON Dry Batch Process





## BEKON Dry Batch Process





## Dry AD Plant for 25.000 t/a OFMSW in Linares (Mexico)



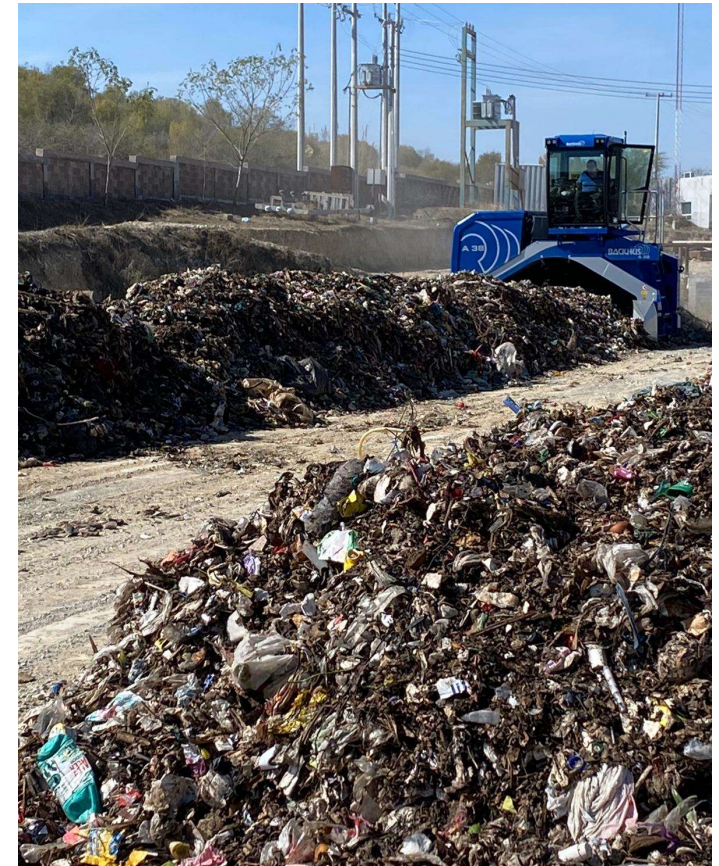


## Dry AD Plant for 25.000 t/a OFMSW in Linares (Mexico)





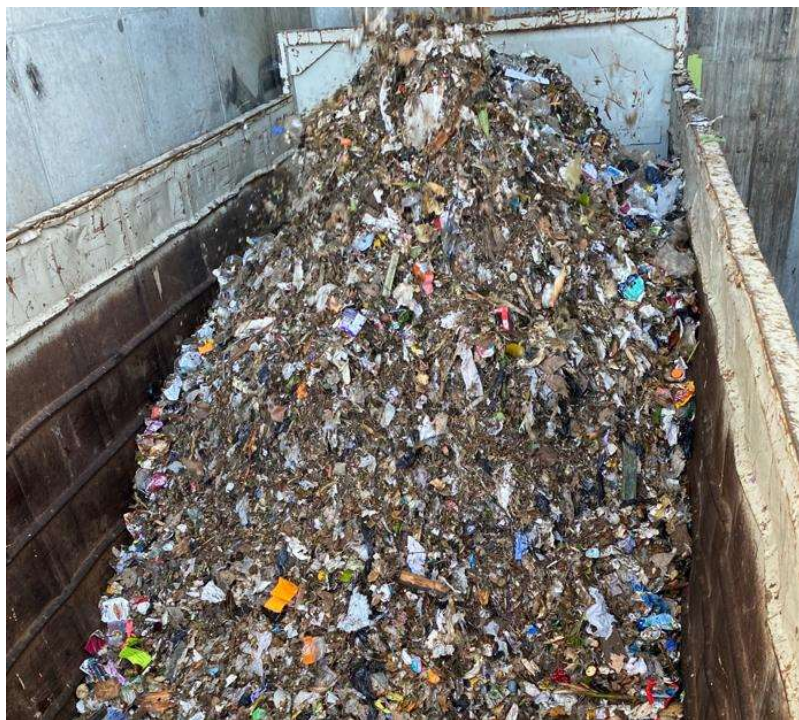
## Dry AD Plant for 25.000 t/a OFMSW in Linares (Mexico)





## Dry AD Plant for 70.000 t/a OFMSW and SSO in Santa Barbara (USA)

OFMSW < 80 mm



SSO





## Dry AD Plant for 70.000 t/a OFMSW and SSO in Santa Barbara (USA)





## Dry AD Plant for 70.000 t/a OFMSW and SSO in Santa Barbara (USA)





**Thank you!**

**BEKON GmbH**  
Feringastr. 7  
85774 Unterföhringen  
GERMANY

**Eggersmann Anlagenbau GmbH**  
Carl-Zeiss-Str. 6-8  
32549 Bad Oeynhausen  
GERMANY